



KINETIC MOBILE CONTINUOUS DRYING

The Kinetic series sets new standards for mobile grain dryers. It is the ultimate dryer for growers or contractors who require a high capacity mobile grain dryer. As a cascading mixed flow dryer, the kinetic adds the convenience of mobility to your harvesting operations.

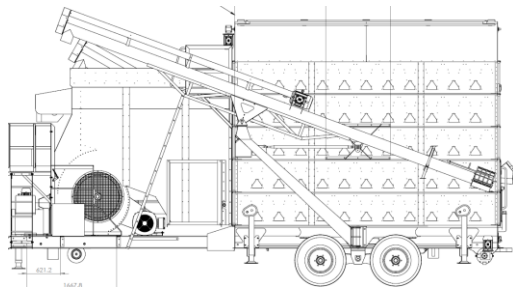
With a diesel burner system its own 3-phase power, air compressor, fuel supply, a high capacity swing-out auger, air bag suspension for ease of transport and a second under silo short auger, the kinetic truly is the complete mobile grain drying package. The dryer has also been designed to allow it to be towed on public roads as an agricultural machine.



- Get Harvesting Earlier**
- Better Quality and Quantity**
- Shorter Harvest Period**
- More Harvest Hours Per Day**
- Reduced Losses**
- Better Prices**

AGRIDRY
CONTROL YOUR HARVEST

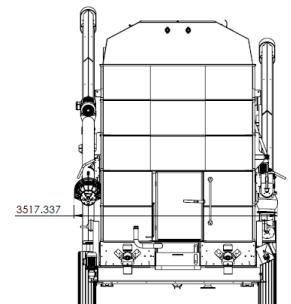
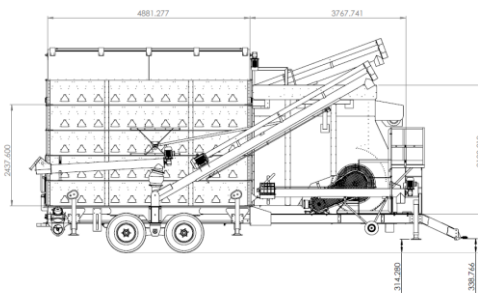
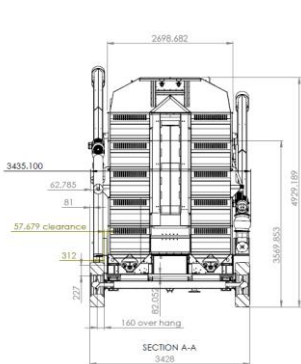
SPECIFICATIONS:



Model		KIN10
Objective Material		<i>Please refer to our Commodities List</i>
Holding Capacity / batch (m³)		26m³
Performance	Loading (tonne/Hr)	80t initial / 27 Continuous
	Unloading (tonne/Hr)	27t Continuous
	Drying Rate (%/Hr)	3%
Drying Method		Batch and Continuous
Heated Air Source	Equipment	Diesel Burner
	Fuel	Diesel
	Temperature Control	Automatic
Power Supply	Voltage	3Phase 415V
	Alternator	105kVA
Power Consumption	Main Fan	30kW
	Cooling Fan	NA
	Discharge Screw	2 x 1.5kW
	Empty Screw	1 x 1.5kW
	Levelling Screw	2 x 1.5kW
	Metering	2 x 018kW
	Cross Screw	2 x 1.5kW
	Infeed Screw	7.5kW
Safety Devices	Over Temperature Relay	
	Plenum Air Temperature Sensor	
	Airflow Detection Sensor	
	Motor Overload Protection	
Standard Equipment	7" Full Colour Touch Screen	
Optional Equipment	Outside Air and Humidity Sensor	

**The drying rate may vary from the rate above depending on material condition. (moisture, contamination, variety), Outside circumstances (temperature, humidity), and operating conditions (operational setup, assisting equipment)*
Drying rate is calculated on drying wheat from 15% to 12% at Ambient Conditions of 20°C @70% Relative Humidity and Drying Air Temp 65°C

DIMENSIONS:



Model	Width (mm)	Length (mm)	Height (mm)
KIN10	3445	10462	4887

AgriDry Dryers Pty Ltd
13 Molloy Street, Toowoomba
Queensland, 4350
PH: +61 746314300
Fax: +61 746314301

Website: www.agridrydryers.com
Email: sales@agridrydryers.com